

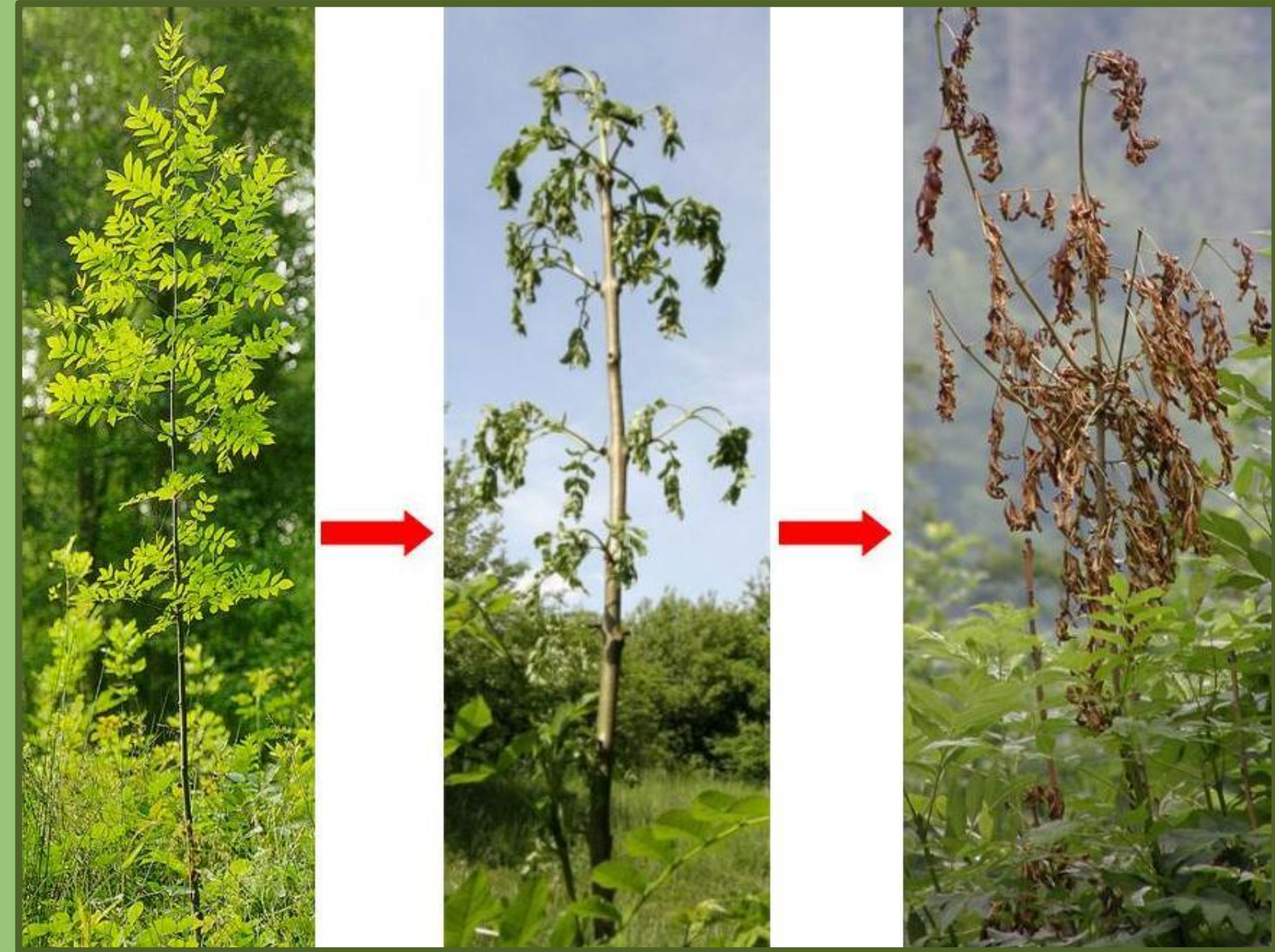
Ash Dieback In Dundee



What is Ash Dieback?



- Most significant tree disease to affect broadleaved trees since Dutch Elm Disease
- Caused by a wind-borne fungus
- The dieback is often visible in the canopy in the summer.
- Trees may survive the disease for a time but eventually the tree will die.



Problem?

- Health and Safety
 - Branches become dry and brittle
 - Unpredictable
 - Difficult to manage- unable to climb
- Environmental
 - Impact on the landscape
 - Impact on the environment



Bell Street Carpark 2022

Ash Dieback in Dundee



- Sought advice from Tree Council for Scotland
- Council working group was set up to work on an action plan in 2021
- Questions:
 - What resources will be required?
 - What will the impact of removing trees be?
 - How many ash trees in Dundee?
 - How many are maintained by DCC?



Myrekirk Road 2021

Action Plan



Survey

Find location of ash,
their quantity and
quality



Act

Deal with trees that
require removal or
pruning



Recover

Replace the removed
trees with suitable
species

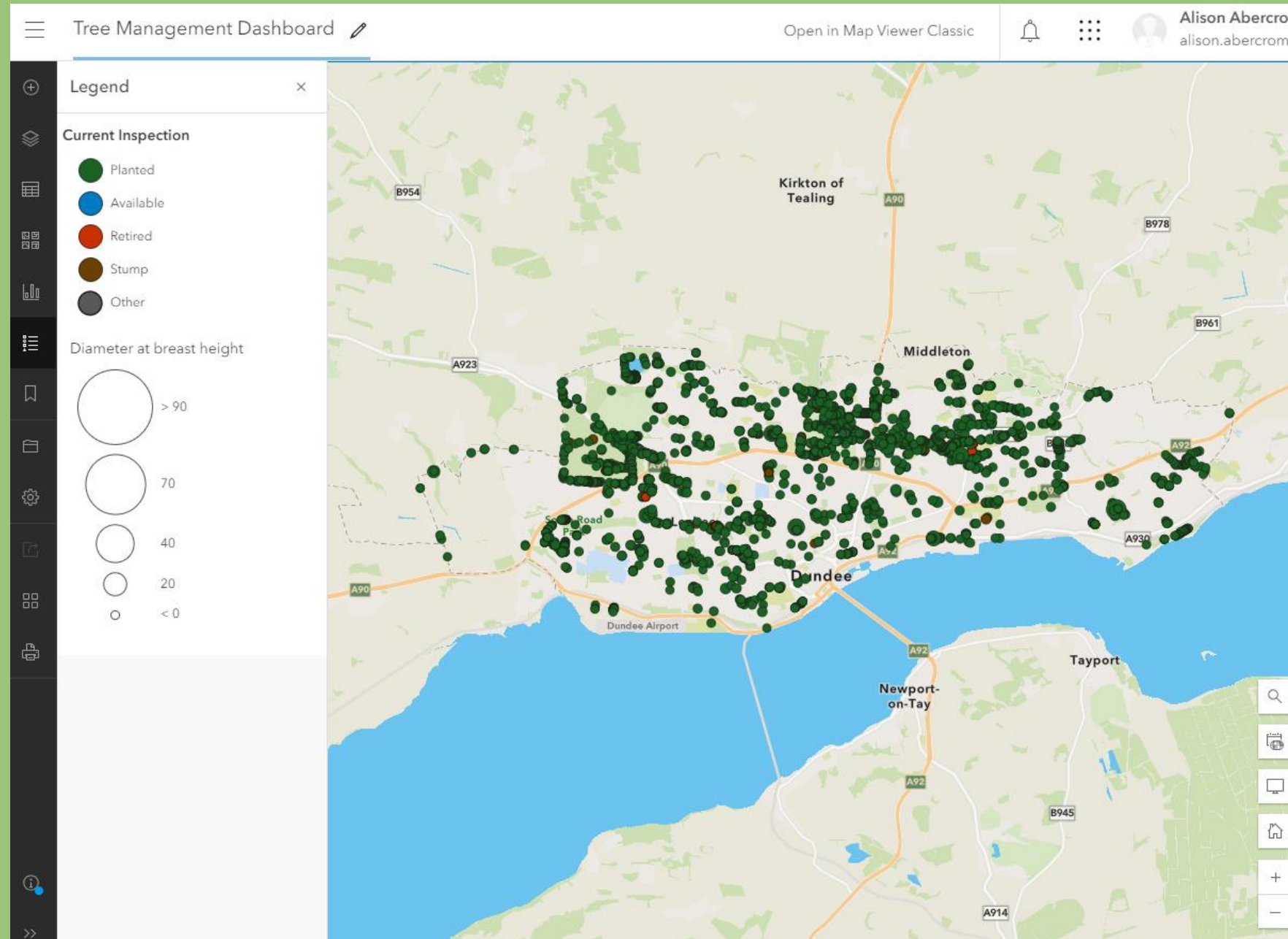
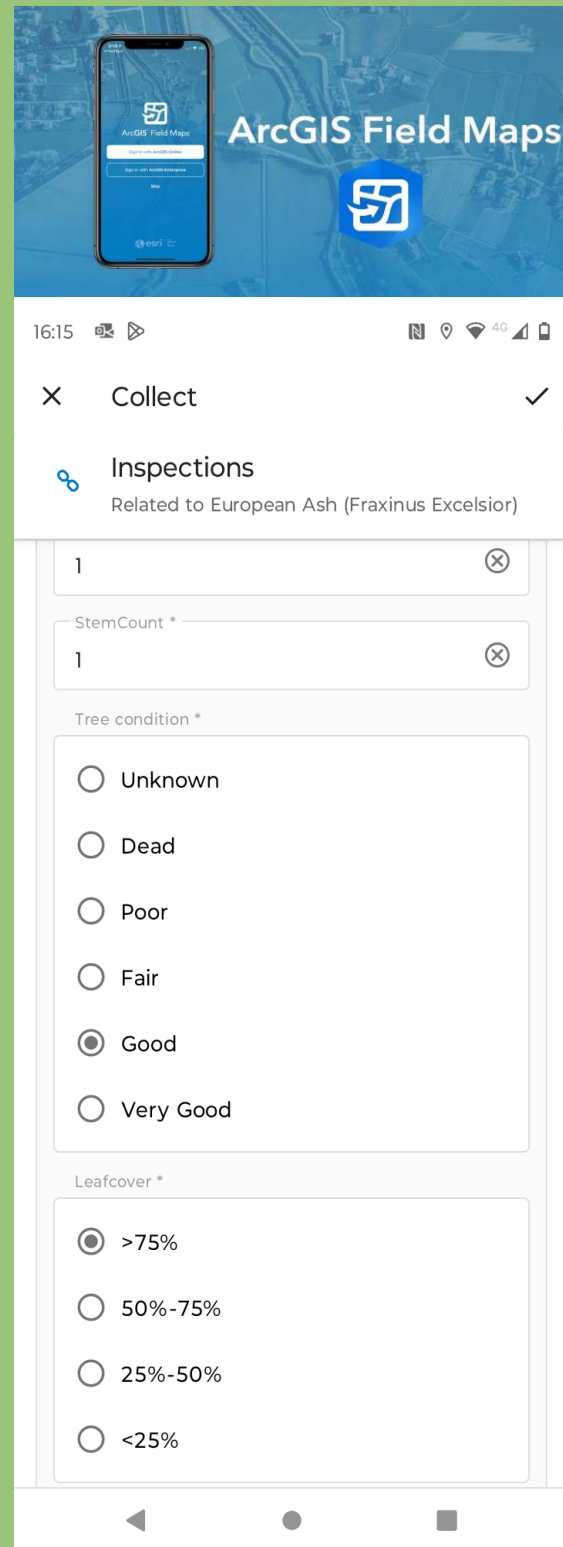


Build Resilience

Ensure that the city
tree resource is
resilient to future
climate changes
and the potential
issues this may
bring.

Ash Survey

- DCC tree data incomplete
- Needed to design a survey and find an appropriate method of storing and managing the data
- ESRI Tree Management Solutions



Survey

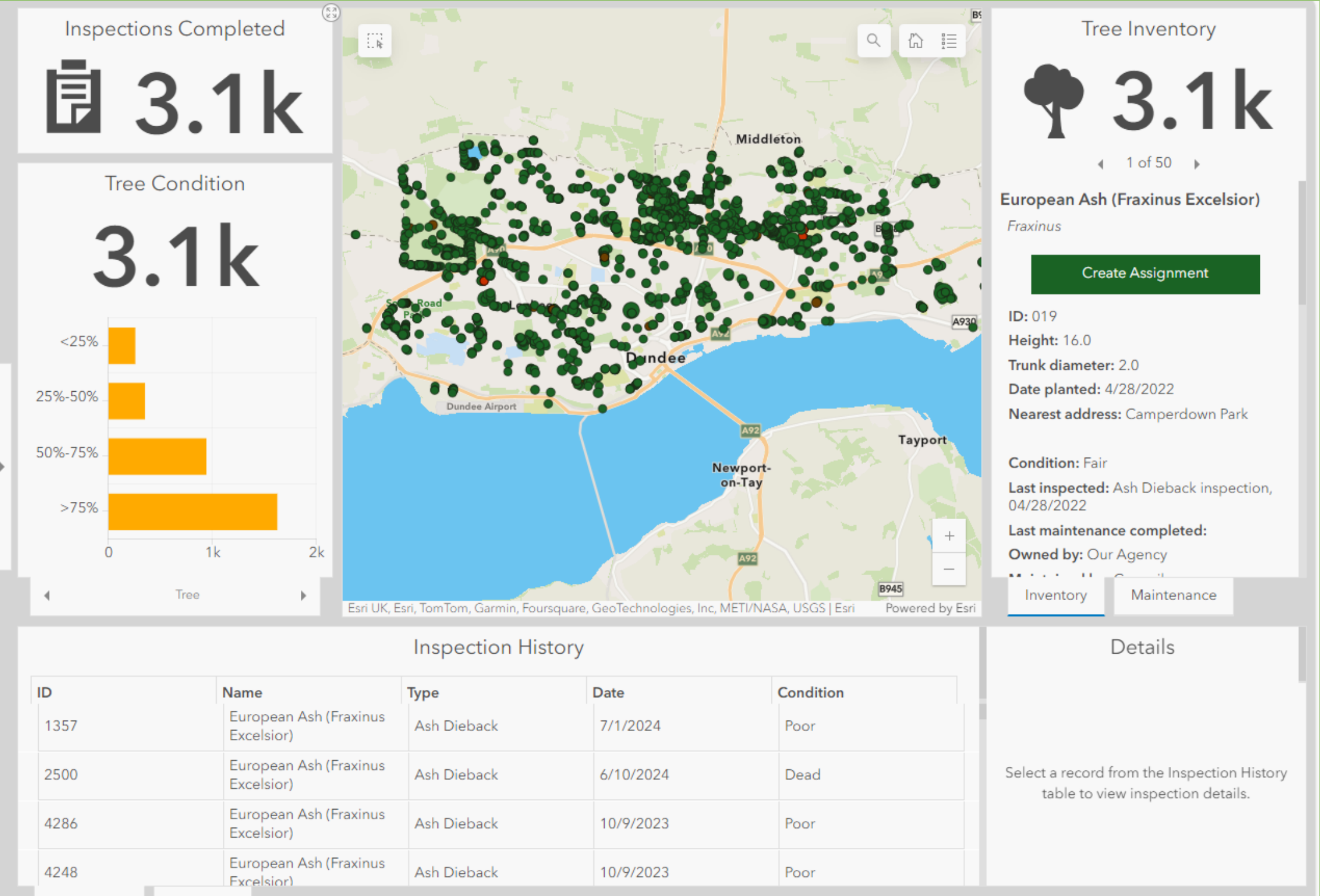
- 3 members of staff trained up to carry out a survey on a part time basis over the span of 18 months.
- Started with high-risk areas then moved onto other areas.
- Contractor brought in to finish.



Surveyors at Craigie High School

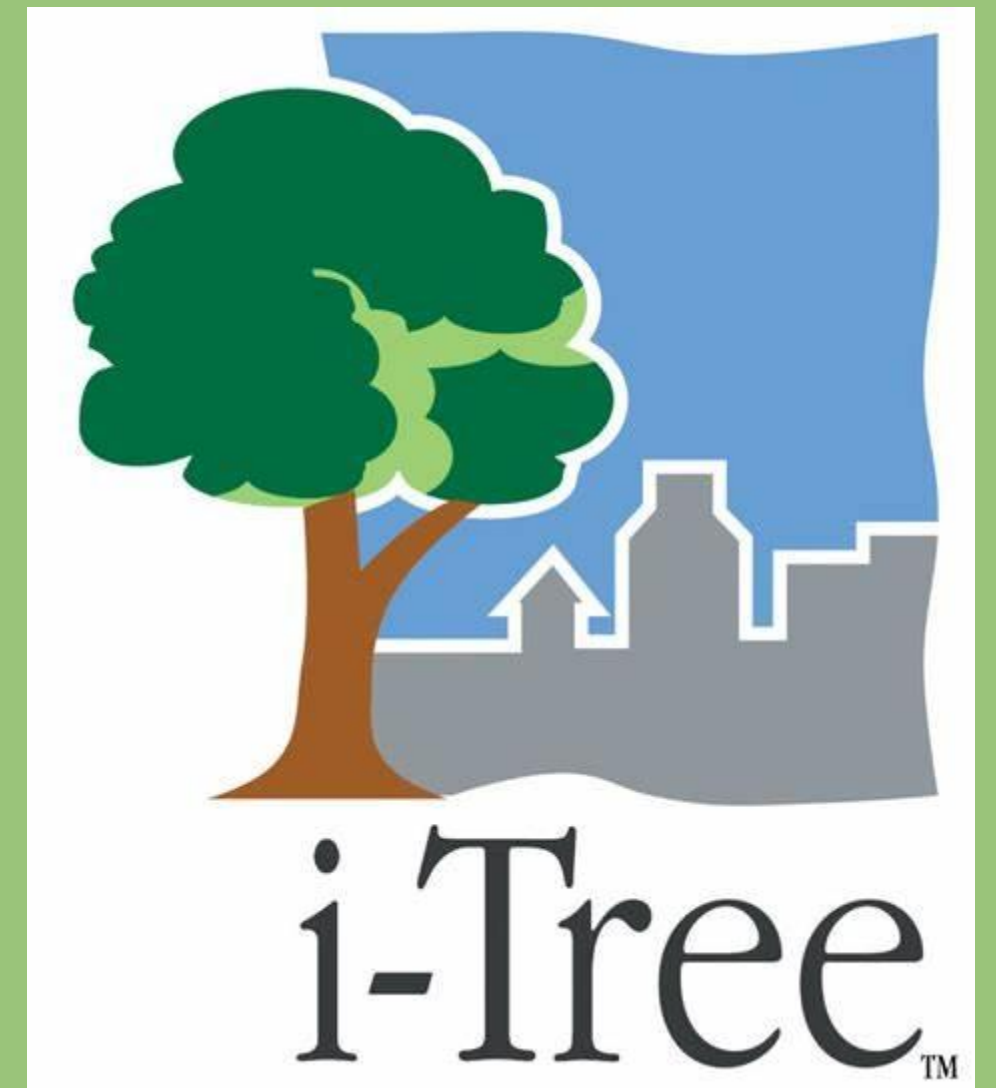
Current Situation

- Some trees identified for immediate removal
- Budget agreed and procurement framework developed
- Now have contractors in place to remove trees identified in later stages of disease each winter
- Annual re-survey
- Allows us to keep healthy trees for as long as possible, identify any resistant trees.



Conclusion and looking to the future

- Demonstrated that data is been incredibly useful and important
- Looking to expand the tree survey to include all street trees in the city
- Dundee iTree project
- Data used to underpin a new urban tree strategy for Dundee



THANK YOU



